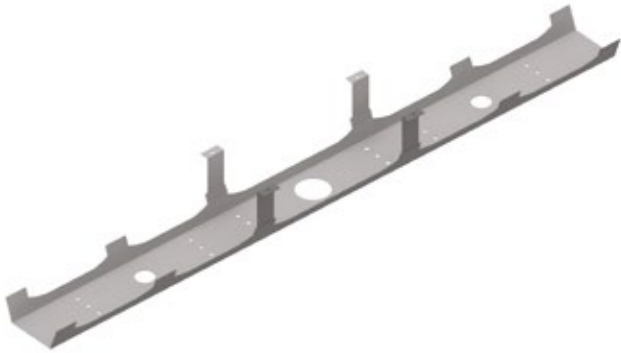


Cable Trays

Cable management trays, shared / bench desking
CTS110 / CTS140



Technical specifications

Dimensions	CTS110: W1100 x D110 x H130 mm CTS140: W1400 x D110 x H130 mm
Weight	CTS110: 1.6kg CTS140: 1.8kg
Materials	Steel
Warranty	5 years

Features

- Fixes to underside of desktop
- Available in black, white, silver or anthracite