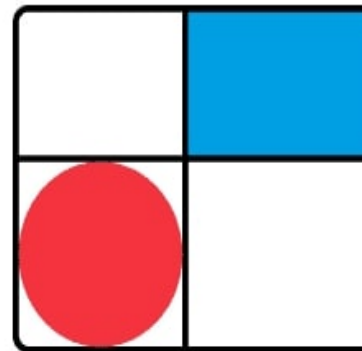


dams



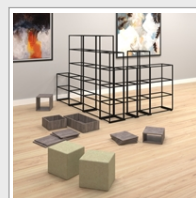
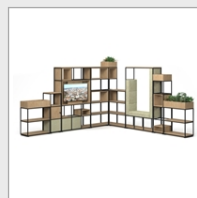
PRODUCT DATA SHEET

Flux modular storage double unit - 5 high



FL-25D

The Flux modular shelving system epitomises the future of adaptable, modern design. Flux has a capacitor for an infinite number of layout options and shapes to help create work zones in any space to promote privacy or transparency as needed. The crisp, clean aesthetic of the black frame allows you to break up the workplace landscape while bringing together a wide range of complementary components and products – and, never compromising on design.



PRODUCT FEATURES

- Double width starter tower units supplied with 2 linking brackets
- Modular grid based shelving/storage system for adaptable, flexible spaces
- Configured in an infinite number of ways to suit any space
- Fully welded frame construction for easy installation & added strength
- Available in 2, 3, 4 & 5 high cubes, with linking brackets to combine straight or right-angled shelving units
- Wooden add-ons and

DIMENSIONS & SPECIFICATIONS

Height	Width	Depth
2045mm	820mm	420mm

RRP: £756.00
Bar Code:
Conforms to:

Colour: Black
Warranty: 2 years

Pack Quantity: 1
Weight (Kg):