





FLEX

The ultra-flexible multi-use workstation.

The Flex has a 660mm height range, and is available in over 100 décor, size and frame colour options, making it an adaptable must-have for breakout areas, meeting rooms and occasional use situations.

A sleek design compact desk, with maximum adjustability.



FLEX

PRODUCT DETAILS

FRAME

Guarantee

5yrs

Frame Width

590mm

Height Range (Inc. 25mm Top)

695 - 1355mm (± 5mm)

Stroke

660mm

Side Bracket Depth

540mm

Foot Depth/Width

540/795mm

Max Even Load Capacity

60kg

Total Frame Weight

21kg

Operational Life

10,000 cycles at full rated load

Voltage

230V AC Input, 24V DC operation

Operational Speed

36mm per second

Standby Power

<0.3 W

Max Operational Power

300W

Programmable Min/Max Height

Yes

Duty Cycle

10% - 1min on, 9mins off

Noise Level

<42 dB

Anti-Collision

Inbuilt overload protection

Inbuilt temperature protection

Compliance

CE Conformity

Machine Directive 2006/42/EC

EMC Directive 2014/30EU

Low Voltage Directive 2014/35/EC

REACH, WEEE and RoHS 3 2015/863

EN 527-1:2011 Type A, EN 527-2:2016

ISO 21016

DESKTOP

Guarantee

5yrs

Material

25mm MFC

Edging

2mm ABS

Compliance

FSC Certified

Stock Sizes

800 x 600mm

900 x 600mm

PACKAGING

Frame

Size - 820 x 580 x 150mm

Weight - 24kg

Quantity - 1

Top (size dependant)

Size - 1100 x 700 x 30mm

Weight - 10 - 11kg

Quantity - 1

INSTALLATION

Build Time (per unit)

15 - 20 mins

Suitable for self-assembly

Yes

SAMPLES

Order free desktop décor samples at

www.lavorodesign.com/samples



The Flex height adjustable table is a single leg solution for a multitude of applications. It features a tapered base for ease of access and can carry a 60kg even load. It comes with interchangeable castors and adjustable feet.

Available in multiple size options, in our complete range of desk top décors.

FEATURES



Height Range: 695 - 1355mm



5 Year Guarantee



Speed: 36mm Per Second



Next Day Delivery



Load Capacity: 60kg



Single Motor Desk

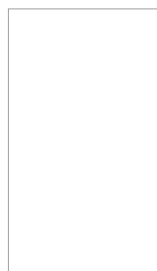
FRAME OPTIONS



Black
RAL 9005



Silver
RAL 9006



White
RAL 9016

SUSTAINABILITY



FLEX

BLACK FRAMES

RAL 9005



BLACK

Black Frame

800x600: [BFLX4/800600BLA](#)

900x600: [BFLX4/900600BLA](#)



GRAPHITE

Black Frame

800x600: [BFLX4/800600GRA](#)

900x600: [BFLX4/900600GRA](#)



GREY

Black Frame

800x600: [BFLX4/800600GRY](#)

900x600: [BFLX4/900600GRY](#)



WHITE

Black Frame

800x600: [BFLX4/800600WHI](#)

900x600: [BFLX4/900600WHI](#)



WENGE

Black Frame

800x600: [BFLX4/800600WEN](#)

900x600: [BFLX4/900600WEN](#)



ANTHRACITE SHERMAN OAK

Black Frame

800x600: [BFLX4/800600ASO](#)

900x600: [BFLX4/900600ASO](#)



NATURAL DIJON WALNUT

Black Frame

800x600: [BFLX4/800600NDW](#)

900x600: [BFLX4/900600NDW](#)



TIMBER

Black Frame

800x600: [BFLX4/800600TIM](#)

900x600: [BFLX4/900600TIM](#)



GREY NEBRASKA OAK
Black Frame

800x600: [BFLX4/800600GNO](#)
900x600: [BFLX4/900600GNO](#)



BEECH
Black Frame

800x600: [BFLX4/800600BEE](#)
900x600: [BFLX4/900600BEE](#)



OAK
Black Frame

800x600: [BFLX4/800600OAK](#)
900x600: [BFLX4/900600OAK](#)



MAPLE
Black Frame

800x600: [BFLX4/800600MAP](#)
900x600: [BFLX4/900600MAP](#)



CASCINA PINE
Black Frame

800x600: [BFLX4/800600CAS](#)
900x600: [BFLX4/900600CAS](#)



BLACK PLY EDGE
Black Frame

800x600: [BFLX4/800600BLA/PE](#)
900x600: [BFLX4/900600BLA/PE](#)



GRAPHITE PLY EDGE
Black Frame

800x600: [BFLX4/800600GRA/PE](#)
900x600: [BFLX4/900600GRA/PE](#)



WHITE PLY EDGE
Black Frame

800x600: [BFLX4/800600WHI/PE](#)
900x600: [BFLX4/900600WHI/PE](#)



CONCRETE
Black Frame

800x600: [BFLX4/800600CON](#)
900x600: [BFLX4/900600CON](#)



FERRO BRONZE
Black Frame

800x600: [BFLX4/800600FER](#)
900x600: [BFLX4/900600FER](#)

SEE PAGE 194
FOR DESKTOP
DÉCOR DETAILS

FLEX

SILVER FRAMES

RAL 9006



BLACK

Silver Frame

800x600: [SFLX4/800600BLA](#)

900x600: [SFLX4/900600BLA](#)



GRAPHITE

Silver Frame

800x600: [SFLX4/800600GRA](#)

900x600: [SFLX4/900600GRA](#)



GREY

Silver Frame

800x600: [SFLX4/800600GRY](#)

900x600: [SFLX4/900600GRY](#)



WHITE

Silver Frame

800x600: [SFLX4/800600WHI](#)

900x600: [SFLX4/900600WHI](#)



WENGE

Silver Frame

800x600: [SFLX4/800600WEN](#)

900x600: [SFLX4/900600WEN](#)



ANTHRACITE SHERMAN OAK

Silver Frame

800x600: [SFLX4/800600ASO](#)

900x600: [SFLX4/900600ASO](#)



NATURAL DIJON WALNUT

Silver Frame

800x600: [SFLX4/800600NDW](#)

900x600: [SFLX4/900600NDW](#)



TIMBER

Silver Frame

800x600: [SFLX4/800600TIM](#)

900x600: [SFLX4/900600TIM](#)



GREY NEBRASKA OAK
Silver Frame

800x600: [SFLX4/800600GNO](#)
900x600: [SFLX4/900600GNO](#)



BEECH
Silver Frame

800x600: [SFLX4/800600BEE](#)
900x600: [SFLX4/900600BEE](#)



OAK
Silver Frame

800x600: [SFLX4/800600OAK](#)
900x600: [SFLX4/900600OAK](#)



MAPLE
Silver Frame

800x600: [SFLX4/800600MAP](#)
900x600: [SFLX4/900600MAP](#)



CASCINA PINE
Silver Frame

800x600: [SFLX4/800600CAS](#)
900x600: [SFLX4/900600CAS](#)



BLACK PLY EDGE
Silver Frame

800x600: [SFLX4/800600BLA/PE](#)
900x600: [SFLX4/900600BLA/PE](#)



GRAPHITE PLY EDGE
Silver Frame

800x600: [SFLX4/800600GRA/PE](#)
900x600: [SFLX4/900600GRA/PE](#)



WHITE PLY EDGE
Silver Frame

800x600: [SFLX4/800600WHI/PE](#)
900x600: [SFLX4/900600WHI/PE](#)



CONCRETE
Silver Frame

800x600: [SFLX4/800600CON](#)
900x600: [SFLX4/900600CON](#)



FERRO BRONZE
Silver Frame

800x600: [SFLX4/800600FER](#)
900x600: [SFLX4/900600FER](#)

SEE PAGE 194
FOR FRAME
COLOUR DETAILS

FLEX

WHITE FRAMES

RAL 9016



BLACK

White Frame

800x600: [WFLX4/800600BLA](#)

900x600: [WFLX4/900600BLA](#)



GRAPHITE

White Frame

800x600: [WFLX4/800600GRA](#)

900x600: [WFLX4/900600GRA](#)



GREY

White Frame

800x600: [WFLX4/800600GRY](#)

900x600: [WFLX4/900600GRY](#)



WHITE

White Frame

800x600: [WFLX4/800600WHI](#)

900x600: [WFLX4/900600WHI](#)



WENGE

White Frame

800x600: [WFLX4/800600WEN](#)

900x600: [WFLX4/900600WEN](#)



ANTHRACITE SHERMAN OAK

White Frame

800x600: [WFLX4/800600ASO](#)

900x600: [WFLX4/900600ASO](#)



NATURAL DIJON WALNUT

White Frame

800x600: [WFLX4/800600NDW](#)

900x600: [WFLX4/900600NDW](#)



TIMBER

White Frame

800x600: [WFLX4/800600TIM](#)

900x600: [WFLX4/900600TIM](#)



GREY NEBRASKA OAK
White Frame

800x600: [WFLX4/800600GNO](#)
900x600: [WFLX4/900600GNO](#)



BEECH
White Frame

800x600: [WFLX4/800600BEE](#)
900x600: [WFLX4/900600BEE](#)



OAK
White Frame

800x600: [WFLX4/800600OAK](#)
900x600: [WFLX4/900600OAK](#)



MAPLE
White Frame

800x600: [WFLX4/800600MAP](#)
900x600: [WFLX4/900600MAP](#)



CASCINA PINE
White Frame

800x600: [WFLX4/800600CAS](#)
900x600: [WFLX4/900600CAS](#)



BLACK PLY EDGE
White Frame

800x600: [WFLX4/800600BLA/PE](#)
900x600: [WFLX4/900600BLA/PE](#)



GRAPHITE PLY EDGE
White Frame

800x600: [WFLX4/800600GRA/PE](#)
900x600: [WFLX4/900600GRA/PE](#)



WHITE PLY EDGE
White Frame

800x600: [WFLX4/800600WHI/PE](#)
900x600: [WFLX4/900600WHI/PE](#)



CONCRETE
White Frame

800x600: [WFLX4/800600CON](#)
900x600: [WFLX4/900600CON](#)



FERRO BRONZE
White Frame

800x600: [WFLX4/800600FER](#)
900x600: [WFLX4/900600FER](#)

SEE PAGE 187
FOR POWER
AND CHARGING

STOCK TOP DÉCORS

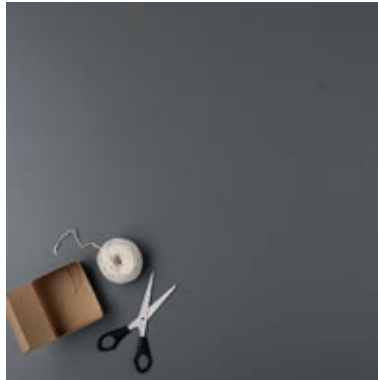
BLACK

EGGER U999



GRAPHITE

KRONOSPAN 0162



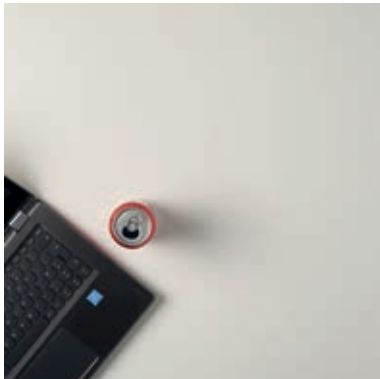
GREY

KRONOSPAN U112



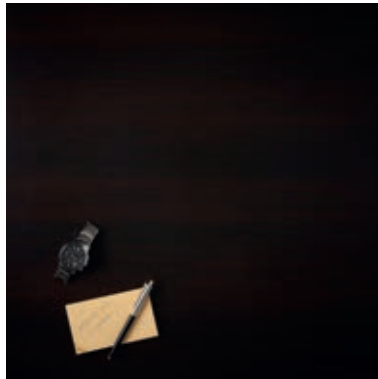
WHITE

KRONOSPAN K101



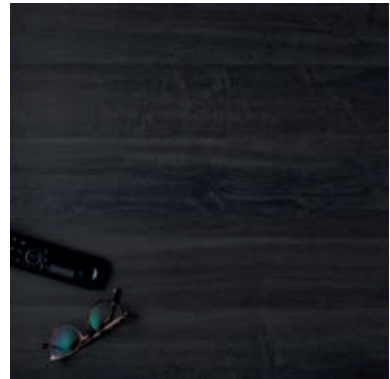
WENGE

EGGER H1137



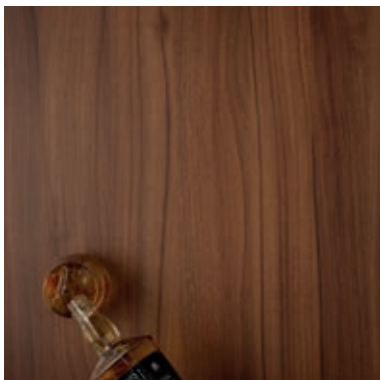
ANTHRACITE SHERMAN OAK

EGGER H1346



NATURAL DIJON WALNUT

EGGER H3734



TIMBER

EGGER H1487



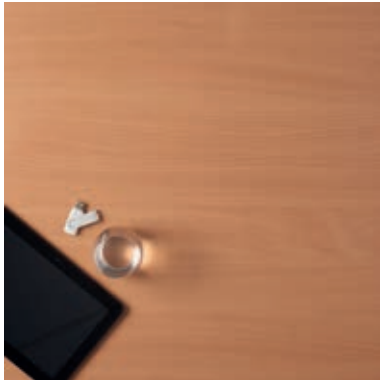
GREY NEBRASKA OAK

EGGER H3332



BEECH

KRONOSPAN D381



OAK

EGGER H1334



MAPLE

KRONOSPAN D375



CASCINA PINE

EGGER H1401



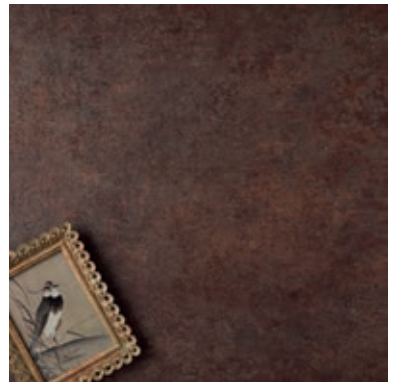
CONCRETE

EGGER F186



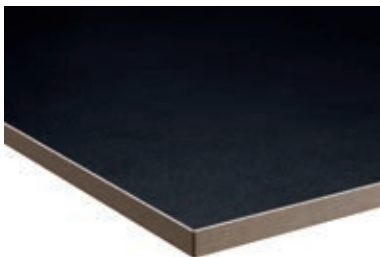
FERRO BRONZE

EGGER F302



BLACK PLY EDGE

KRONOSPAN U999



GRAPHITE PLY EDGE

KRONOSPAN 0162



WHITE PLY EDGE

KRONOSPAN K101

