

# Power Supplies

## Daisy Chaining

### BS6396

**BS6396:2022 is the latest British Standard covering the installation of electrical systems in office furniture and is designed to ensure the safe provision of power in the workplace. All power modules used in the office need to comply with this standard.**

BS6396:2022 defines the requirements for the safe use of single phase electrical power sockets (operating at rated voltages up to 250V), supplied through connection to the fixed permanent wiring installation of the office building by a 13A fused plug.

BS6396:2022 limits the number of BS1363 13A sockets connected to a single supply to either:

- **No more than 6 sockets fused at 3.15A**
- **No more than 4 sockets fused at 5A**

BS6396 also specifies the number of Extra Low Voltage (ELV) outlets to 150W output. This is in addition to the above permitted max number of AC sockets above. This would include USB-A+C charge ports.

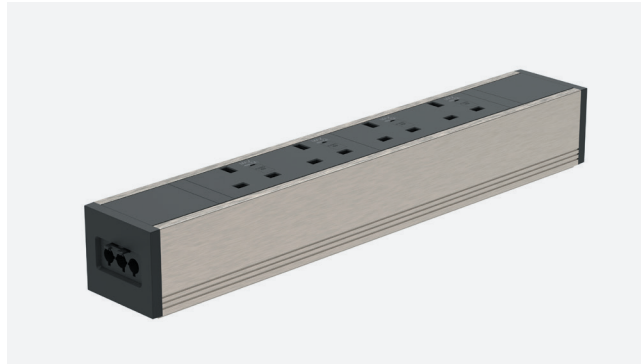
#### Earthing

Power sockets mounted in plastic insulated housing (Boost) or encased in an earthed metal housing (Powerlink) do not require earthing.



### Solo Plus in-surface power

Solo Plus is available with a single Type G (UK) power socket and various configurations of HDMI and RJ45 data transfer ports. All have a 0.5m drop cable with 3-pole male connector.



### Powerlink under-desk power

Powerlink is available in the following configurations, and has male and female 3-pole connections:

- 2 power sockets
- 3 power sockets
- 4 power sockets
- 6 power sockets



### Boost desktop power

Boost is available in the following configurations and has a 0.5m drop cable with 3-pole male connector.

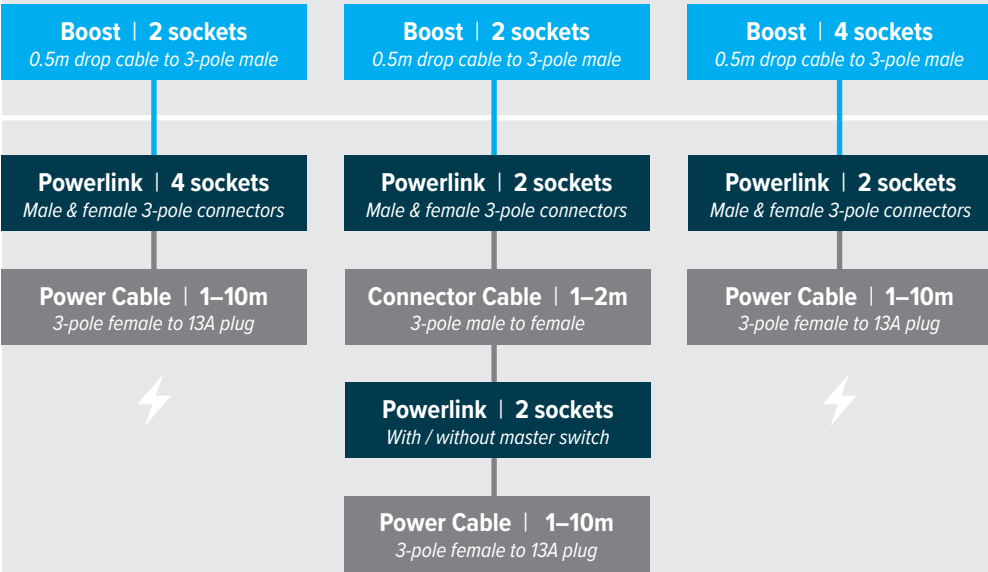
- 1 power socket, USB-A+C charge
- 2 power sockets
- 2 power sockets, USB-A+C charge
- 2 power sockets, 2 x RJ45 data
- 2 power sockets, USB-A+C charge, 2 x RJ45 data
- 4 power sockets, USB-A+C charge



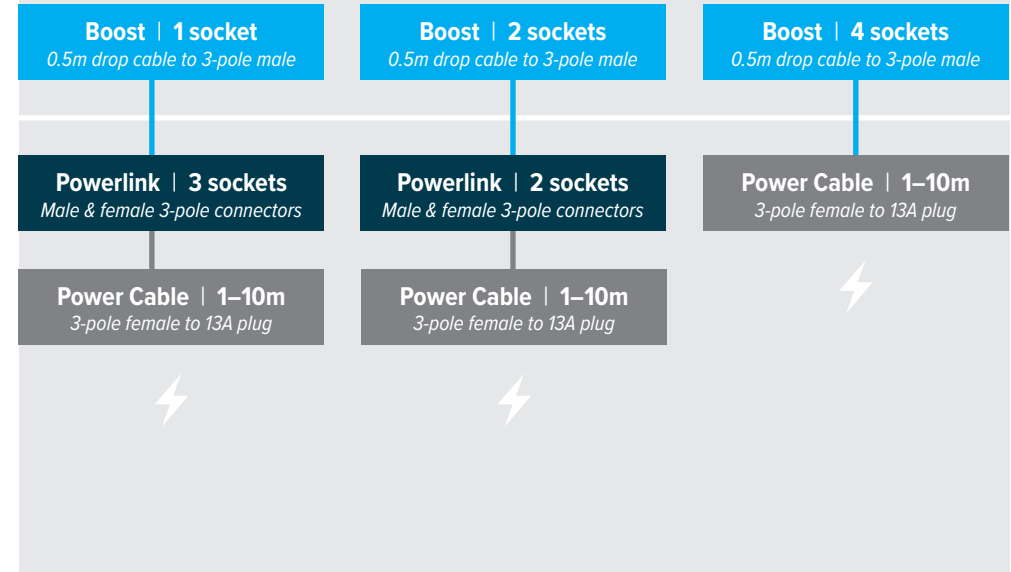
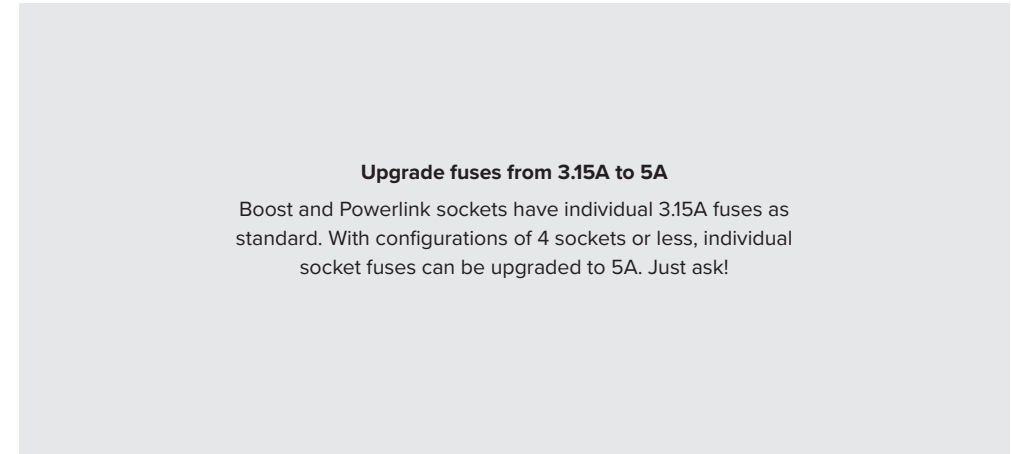
### 3-pole electrical system

Most Metalicon power modules use a 3-pole connector system which allows modules to be daisy-chained together, maximising the amount of available power sockets. The 3-pole system consists of male and female connectors with the addition of an optional retaining clip, (if required) to hold the connectors together.

## Desktop + Under-desk Power Examples



6 socket configurations



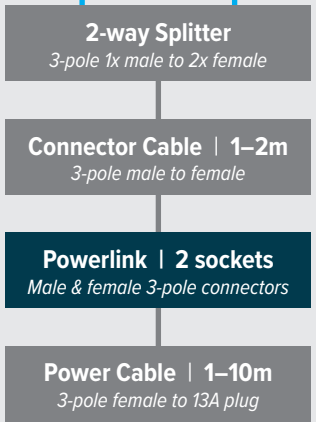
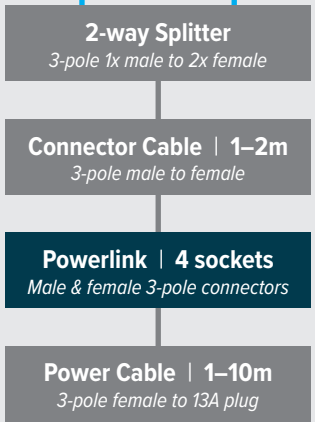
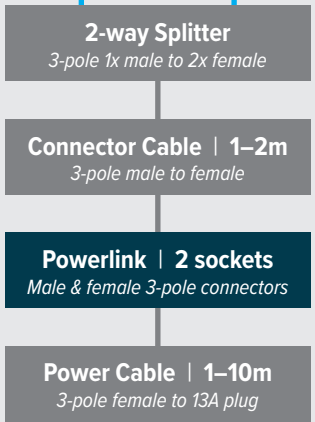
4 socket configurations

# Desktop + Desktop Power Examples

Daisy chaining desktop or in-surface modules (with a 0.5m drop cable) requires a 2-way 3-pole splitter (1 x male to 2 x female) for every additional module.



- Boost | 2 sockets**  
*0.5m drop cable to 3-pole male*
- Boost | 2 sockets**  
*0.5m drop cable to 3-pole male*
- Solo Plus | 1 sockets**  
*0.5m drop cable to 3-pole male*
- Solo Plus | 1 socket**  
*0.5m drop cable to 3-pole male*
- Solo Plus | 1 socket**  
*0.5m drop cable to 3-pole male*
- Solo Plus | 1 socket**  
*0.5m drop cable to 3-pole male*

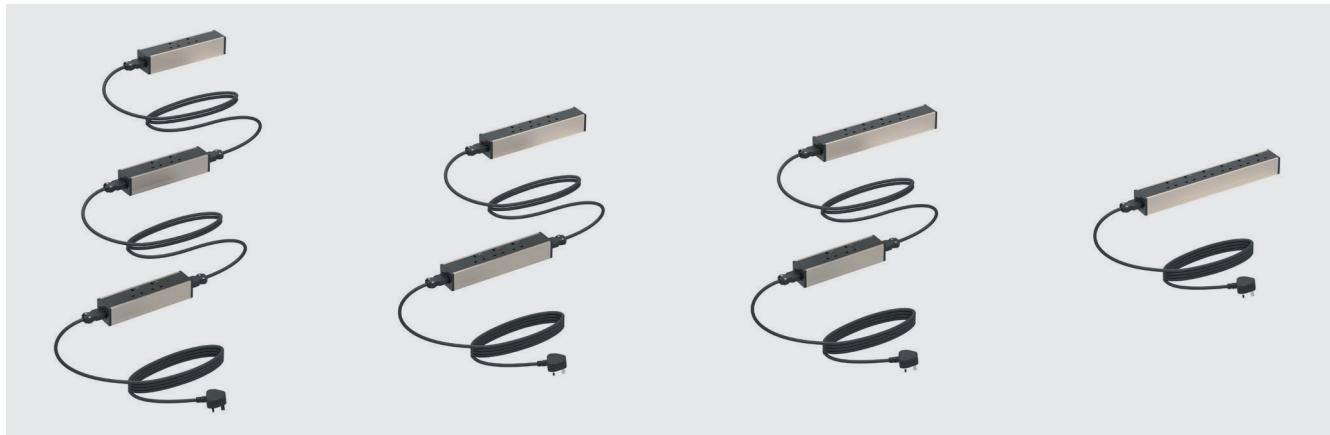


6 socket configurations

4 socket configurations

**Upgrade fuses from 3.15A to 5A**  
Boost and Powerlink sockets have individual 3.15A fuses as standard. With configurations of 4 sockets or less, individual socket fuses can be upgraded to 5A. Just ask!

## Under-desk Power Only Examples



**Upgrade fuses from 3.15A to 5A**  
 Boost and Powerlink sockets have individual 3.15A fuses as standard. With configurations of 4 sockets or less, individual socket fuses can be upgraded to 5A. Just ask!

