

PORT-X

IN desk power module



Port-X offers a compact and versatile solution for power and connectivity, featuring AC power sockets, USB PD and QC chargers and up to two media connections within an 80mm grommet unit. Ideal for meeting areas, sofa lounges, or bedside tables, Port-X brings convenient access to power right where it's needed.

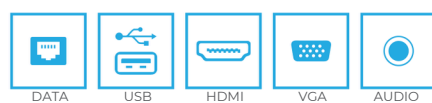
Designed for easy installation, it combines functionality with a sleek, minimalist look. The modular components are available in three colors, providing flexibility to match various interiors.



AVAILABLE SOCKET TYPES:



AVAILABLE MEDIA CONNECTIONS:



FASCIAS ● ○ ●

USP

- COMPLIES WITH THE BSI KITEMARK KM 686563 (UK),
IEC 60884-1:2002 + A1:2006 AND IEC 60884-2-7:2011 + A1:2013 (EUROPE)
- AVAILABLE IN DIFFERENT COLOURS
- DESIGNED TO FIT INTO AN 80 MM PORT HOLE AND
- DESK THICKNESS BETWEEN 15 AND 45MM
- LOCKING RING ENABLES PERFECT FIXATION WITH NO EFFORT
- AVAILABLE WITH 35W OR 65W USB A+C CHARGER (PD & QC)
- AVAILABLE WITH A CHOICE OF INTERNATIONAL AC POWER SOCKET OPTIONS

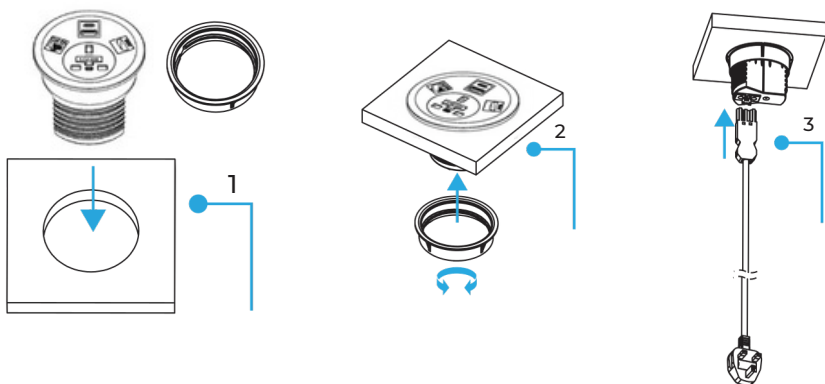
APPROVALS & CERTIFICATES:





INSTALLATION

Make Ø80mm cutout. Ensure that there is sufficient clearance, 150mm below the surface and 30 mm between the cutout edge and the edge of the work surface.

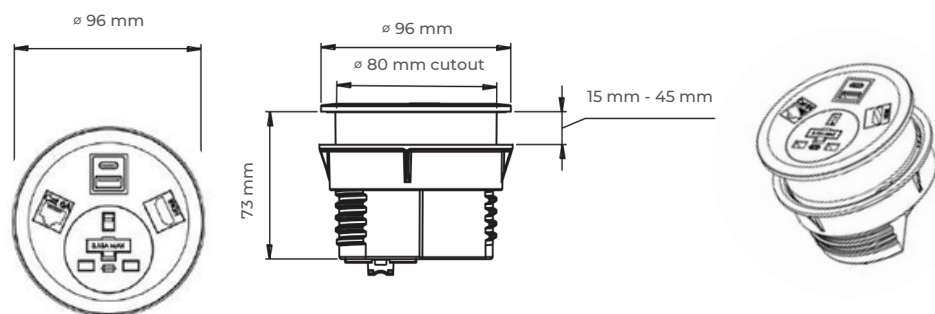


STEP 1. Remove the locking ring and place the module in the desk cutout.

STEP 2. Whilst twisting the locking ring, set up module orientation.

STEP 3. Connect the mains lead with the 3 Pole Connector

STANDARD DIMENSIONS



TECHNICAL

Configuration:

Power only / Power and USB A+C charger (PD & QC) combined
Power, USB A+C charger (PD & QC), and up to two media connections combined
Power and media connections in combined units are separated internally

Earthing: Fully earthed

Fusing (UK sockets only to enable compliance to BS6396): 5mm x 20mm ceramic fuses, with appropriate marking indicating the rating (3.15A/5A).
All sockets feature integral, spare fuses.

Testing: 100% testing - continuity, polarity & earth

Testing of the USB PD & QC chargers: Output voltages, current, and power in all types of charging standard
Port-X power modules are fully manufactured in-house using ISO 9001:2015 quality-controlled practices.

Our power modules are tested in accredited laboratories of certification houses twice a year; in-house quality control testing of each product is completed on every single power module before it leaves the factory.

Standard colours: black, white and grey.

Additional feature: An integrated 3 Pole Connector allows mains or connector leads to be changed to suit requirements, especially useful during moves and changes. Two or more Port-X power modules can be connected to a single main supply. Contact our representative for more information about daisy chaining.