

Adapt



Accreditations



Product guarantee



Designed & manufactured



EN527-1:2001,
EN527-2:2016+A1:2019,
EN1729-2:2012+A1:2-15

Styles



Straight



Return



Back-to-back

About

Adapt is our vision for systems furniture in the contemporary office. Offering a new, flexible approach to office furniture design, it is perfect for matching desking with meeting tables and even executive desk design for the totally integrated look. Sleek and stylish with clean cut lines and balanced proportions, the Adapt benching solution is a real stand out in the modern office environment.



Bench desk system with shared, recessed legs for runs of desks

Scalloped cut outs in the 25mm desktops allowing cables to pass through

Return desks allow for a greater working area for single & back-to-back desks

Cable tray and vertical risers to ensure complete cable control

Sliding top options to a maximum of 125mm for easy access to cable trays

Frames



Black
(K)

Silver
(S)

White
(WH)

Wood Finishes



Beech
(B)

Grey Oak
(GO)

Oak
(O)

Walnut
(W)

White
(WH)

White/Oak
(WO)

Single Desks 600mm



CODE	W	D	H	RRP
E126	1200	600	725	£418
E146	1400	600	725	£435
E166	1600	600	725	£462



- Single straight desks 600mm deep with scalloped cut outs in the desktops
- Sturdy steel framework and bench tops which take on a floating appearance

Single Desks 800mm

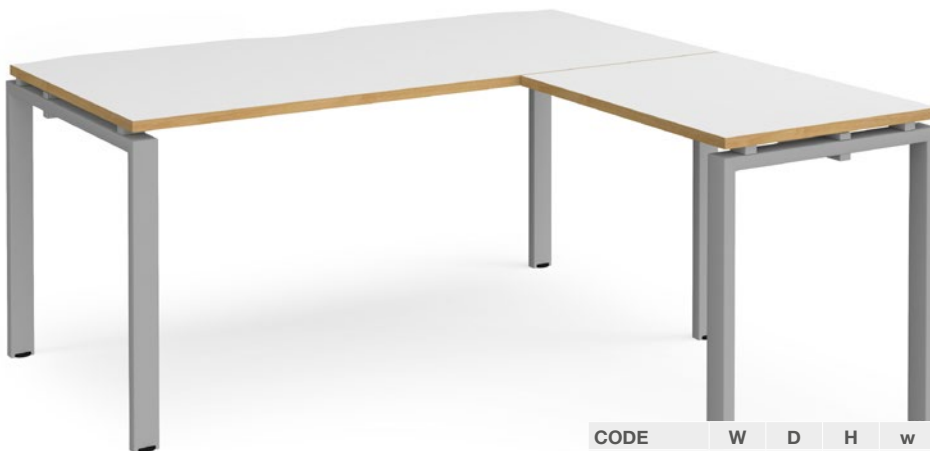


CODE	W	D	H	RRP
E128	1200	800	725	£464
E148	1400	800	725	£488
E168	1600	800	725	£522

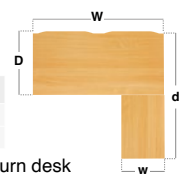


- Single straight desks 800mm deep with scalloped cut outs in the desktops
- Sturdy steel framework and bench tops which take on a floating appearance

Single Desks with Returns



CODE	W	D	H	w	d	RRP
ER1488	1400	800	725	600	1600	£678
ER1688	1600	800	725	600	1600	£702



- Rectangular desks 800mm deep complete with 800mm return desk
- Return can be fitted to either side of desk to extend the working area



Black (K)

Silver (S)

White (WH)

Beech (B)

Grey Oak (GO)

Oak (O)

Walnut (W)

White (WH)

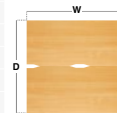
White/Oak (WO)

Please add frame finish followed by desktop finish when ordering eg. **E166** with Silver frame in White/Oak = **E166-S-WO**

Back-to-Back Desks



CODE	W	D	H	RRP
E1212	1200	1200	725	£766
E1412	1400	1200	725	£794
E1612	1600	1200	725	£853
E1216	1200	1600	725	£817
E1416	1400	1600	725	£862
E1616	1600	1600	725	£927

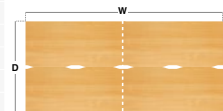


- Two straight desks back-to-back with scalloped cut outs in the desktops
- Extended sturdy steel framework and bench tops which take on a floating look

Double Back-to-Back Desks

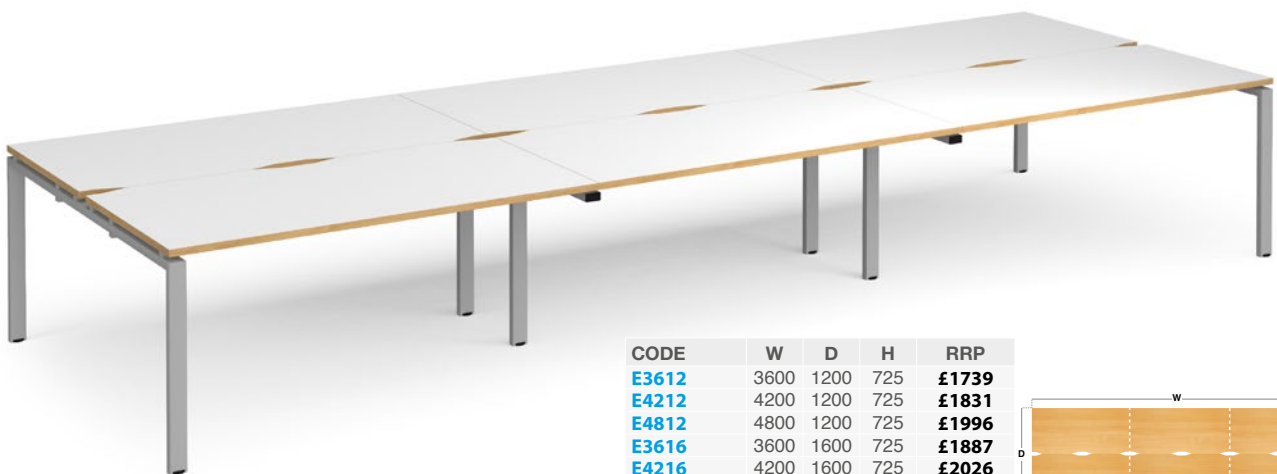


CODE	W	D	H	RRP
E2412	2400	1200	725	£1252
E2812	2800	1200	725	£1314
E3212	3200	1200	725	£1424
E2416	2400	1600	725	£1351
E2816	2800	1600	725	£1444
E3216	3200	1600	725	£1570

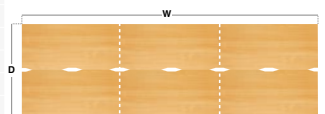


- Four straight desks in a double back-to-back bench desk configuration
- Legs are shared between desk clusters with a recessed centre leg support

Triple Back-to-Back Desks



CODE	W	D	H	RRP
E3612	3600	1200	725	£1739
E4212	4200	1200	725	£1831
E4812	4800	1200	725	£1996
E3616	3600	1600	725	£1887
E4216	4200	1600	725	£2026
E4816	4800	1600	725	£2214



- Six straight desks in a triple back-to-back bench desk configuration
- Legs are shared between desk clusters with two recessed centre leg supports

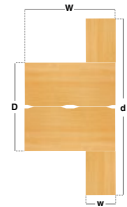


Please add frame finish followed by desktop finish when ordering eg. **E1616** with Silver frame in White/Oak = **E1616-S-WO**

Back-to-Back Desks with Returns



CODE	W	D	H	w	d	RRP
ER14168	1400	1600	725	600	3200	£1232
ER16168	1600	1600	725	600	3200	£1295

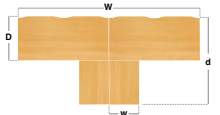


- Two straight desks back-to-back with scalloped cutouts and return desks
- Extended sturdy steel framework and bench tops which take on a floating look

Double Straight Desks with Returns



CODE	W	D	H	w	d	RRP
ER2888	2800	800	725	600	1600	£1232
ER3288	3200	800	725	600	1600	£1295

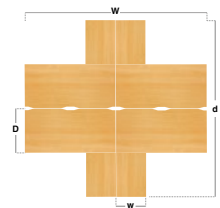


- Two straight desks side-by-side with scalloped cutouts and return desks
- Returns can be fitted to either side of desk to extend the working area

Four Desk Clusters with Returns



CODE	W	D	H	w	d	RRP
ER28168	2800	800	725	600	3200	£2093
ER32168	3200	800	725	600	3200	£2216

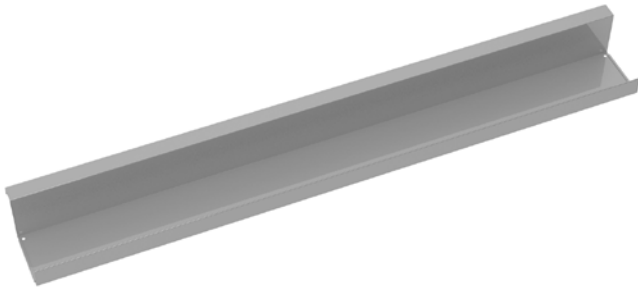


- Back-to-back desks with returns for a modern bench desk configuration
- Legs are shared between desk clusters with a recessed centre leg support



Please add frame finish followed by desktop finish when ordering eg. [ER16168](#) with Black frame in Grey Oak = [E16168-K-GO](#)

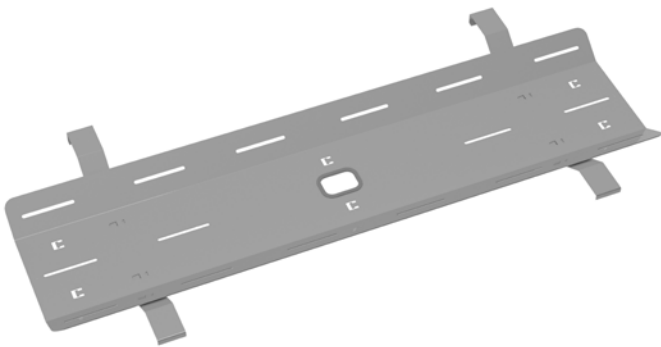
Single Desk Cable Trays



CODE	W	D	H	RRP
ED12SCT	1000	100	60	£77
ED14SCT	1200	100	60	£87
ED16SCT	1400	100	60	£129

- Cable management tray to use on single straight desks
- Positioned under the desk so cables are out of the way but easily accessible

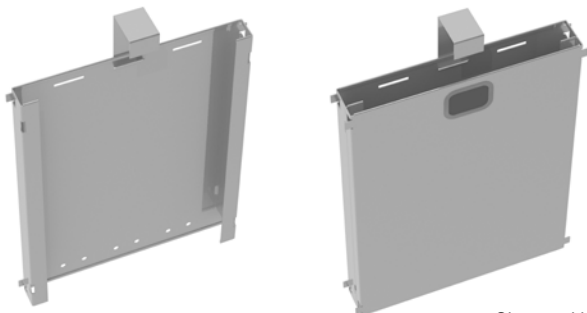
Central Drop Down Cable Trays & Brackets



CODE	W	D	H	RRP
ED12DCT	1000	320	60	£137
ED14DCT	1200	320	60	£145
ED16DCT	1400	320	60	£151

- Shared cable tray which sits central to two back-to-back desks
- Cables can run between two trays for effective cable management & drops down

Mass Vertical Cable Riser



• Shown with cover



CODE	W	D	H	RRP
EDCR	390	65	500	£156

- Fits between recessed centre leg supports to allow cables to rise from the floor
- Front panel can be removed quickly and easily to gain access to wires



Black (K)



Silver (S)



White (WH)

Please add metal finish when ordering eg. **EDCR** in Silver = **EDCR-S**

Single Starter Units



CODE	W	D	H	RRP
E126-SB	1200	600	725	£418
E146-SB	1400	600	725	£435
E166-SB	1600	600	725	£462
E128-SB	1200	800	725	£464
E148-SB	1400	800	725	£488
E168-SB	1600	800	725	£522

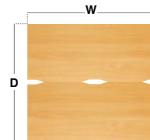


- Single straight starter unit desk with scalloped cut outs in the desktops
- Extend into a modular bench desk system with single desk add-on units

Back-to-Back Starter Units



CODE	W	D	H	RRP
E1212-SB	1200	1200	725	£766
E1412-SB	1400	1200	725	£794
E1612-SB	1600	1200	725	£853
E1216-SB	1200	1600	725	£817
E1416-SB	1400	1600	725	£862
E1616-SB	1600	1600	725	£927



- Two straight starter unit desks back-to-back with scalloped cut outs
- Extend into a modular system with back-to-back desk add-on units

Start simple Then Adapt easily!

Offering choice is essential when creating a space for an agile workforce, and Adapt's thoughtful design and versatile components help you to do more with less.

The flexibility of bench desking allows for easy reconfiguration and expansion of the work area as one project is completed and a new team moves into the space.

Start & Add

Each bench desk configuration starts with a starter unit which can be back-to-back desks, double back-to-back desks, or triple back-to-back desks. Choose your starter unit width, depth and colour

Then simply add your add-on units.



Beam
Steel legs and framework for enhanced strength and stability

Mass cable riser
Manages all the cables from the desk to the floor



Please add frame finish followed by desktop finish when ordering eg. **E166-SB** with Silver frame in Beech = **E166-SB-S-B**

Single Add-on Units



CODE	W	D	H	RRP
E126-AB	1200	600	725	£278
E146-AB	1400	600	725	£296
E166-AB	1600	600	725	£324
E128-AB	1200	800	725	£310
E148-AB	1400	800	725	£333
E168-AB	1600	800	725	£364

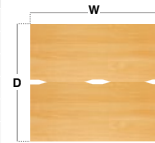


- Single straight add-on unit desk with scalloped cut outs in the desktops
- Use with single desks to extend into a modular system

Back-to-Back Add-on Units



CODE	W	D	H	RRP
E1212-AB	1200	1200	725	£489
E1412-AB	1400	1200	725	£523
E1612-AB	1600	1200	725	£577
E1216-AB	1200	1600	725	£539
E1416-AB	1400	1600	725	£585
E1616-AB	1600	1600	725	£646



- Two straight add-on unit desks back-to-back with scalloped cut outs
- Use with back-to-back desks to extend into a modular system



Cable trays
Central drop down cable trays for easy cable management

Inset legs
Provides improved leg room as the recessed leg is positioned in the centre of the desks

How it works

Today's benching solution has improved flexibility, mobility, and easy access to power and data, which make it the ideal solution for open plan offices to facilitate interaction and collaboration among workers. These desk clusters are available in numerous sizes, leg colours and desktop finishes, with screen options and bespoke cable management solutions – everything an office needs to create a happy, healthy, high performing working environment.

Please note:
Don't mix 600mm deep desks with 800mm deep desks, and don't mix 1200mm deep with 1600mm deep back-to-back desk clusters. You can't mix fixed tops and sliding top desks.



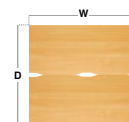
Black (K) Silver (S) White (WH) Beech (B) Grey Oak (GO) Oak (O) Walnut (W) White (WH) White/Oak (WO)

Please add frame finish followed by desktop finish when ordering eg. **E1616-AB** with Silver frame in Beech = **E1616-AB-S-B**

Back-to-Back Desks - Sliding Tops



CODE	W	D	H	RRP
STE1212	1200	1200	725	£978
STE1412	1400	1200	725	£1018
STE1612	1600	1200	725	£1089
STE1216	1200	1600	725	£1045
STE1416	1400	1600	725	£1106
STE1616	1600	1600	725	£1185

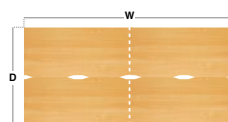


- Two straight desks back-to-back with scalloped cut outs in the tops
- Desktops slide forward up to 125mm allowing greater cable access

Double Back-to-Back Desks - Sliding Tops



CODE	W	D	H	RRP
STE2412	2400	1200	725	£1600
STE2812	2800	1200	725	£1680
STE3212	3200	1200	725	£1821
STE2416	2400	1600	725	£1730
STE2816	2800	1600	725	£1851
STE3216	3200	1600	725	£2007

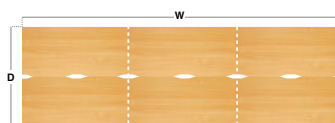


- Four straight desks in a double back-to-back bench desk configuration
- Desktops slide forward up to 125mm allowing greater cable access

Triple Back-to-Back Desks - Sliding Tops



CODE	W	D	H	RRP
STE3612	3600	1200	725	£2220
STE4212	4200	1200	725	£2338
STE4812	4800	1200	725	£2556
STE3616	3600	1600	725	£2416
STE4216	4200	1600	725	£2594
STE4816	4800	1600	725	£2833



- Six straight desks in a triple back-to-back bench desk configuration
- Desktops slide forward up to 125mm allowing greater cable access



Black (K) Silver (S) White (WH)



Beech (B) Grey Oak (GO) Oak (O) Walnut (W) White (WH) White/Oak (WO)

Please add frame finish followed by desktop finish when ordering eg. [STE1616](#) with Silver frame in Walnut = [STE1616-S-W](#)

Back-to-Back Starter Units - Sliding Tops



CODE	W	D	H	RRP
STE1212-SB	1200	1200	725	£978
STE1412-SB	1400	1200	725	£1018
STE1612-SB	1600	1200	725	£1089
STE1216-SB	1200	1600	725	£1045
STE1416-SB	1400	1600	725	£1106
STE1616-SB	1600	1600	725	£1185

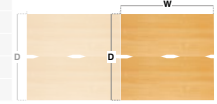


- Two straight desks back-to-back with scalloped cut outs in the tops
- Desktops slide forward up to 125mm allowing greater cable access

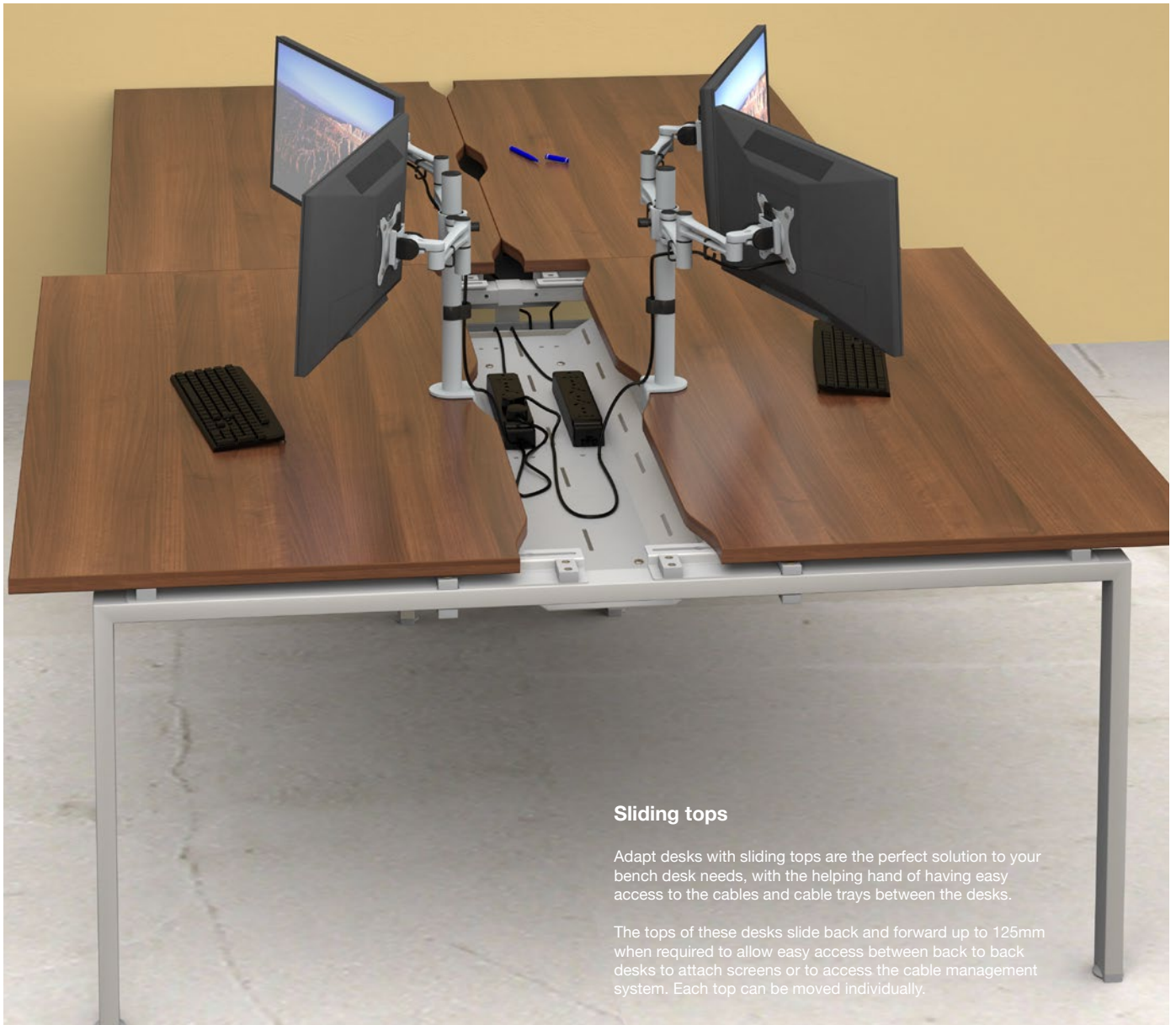
Back-to-Back Add-On Units - Sliding Tops



CODE	W	D	H	RRP
STE1212-AB	1200	1200	725	£626
STE1412-AB	1400	1200	725	£666
STE1612-AB	1600	1200	725	£737
STE1216-AB	1200	1600	725	£689
STE1416-AB	1400	1600	725	£749
STE1616-AB	1600	1600	725	£829



- Two straight add-on unit desks back-to-back with tops that slide forward
- Recessed leg is positioned in the centre of the bench desks



Sliding tops

Adapt desks with sliding tops are the perfect solution to your bench desk needs, with the helping hand of having easy access to the cables and cable trays between the desks.

The tops of these desks slide back and forward up to 125mm when required to allow easy access between back to back desks to attach screens or to access the cable management system. Each top can be moved individually.



Please add frame finish followed by desktop finish when ordering eg. [STE1616-AB](#) with Silver frame in Walnut = [STE1616-AB-S-W](#)